

LAND FOR SALE

Highly Visible Corner at Active Intersection

SEQ US 441 AT US 301, BELLEVIEW, FL 34420

0.7± ACRES



MARKETMASTERS
OF THE SOUTHEAST

PROPERTY FEATURES

- Corner lot on two US Highways
 - Zoned B-U, Business District
 - High visibility in both directions, and from both highways
 - Parcel ID. R38853-000-00
 - Great location for a car wash
 - Easy access from Hwy 441 or Hwy 301
 - 218ft on US 441, and 216ft on US 301
- Call for pricing



MARKETMASTERS
OF THE SOUTHEAST

1890 Kingsley Ave, Suite 102
Orange Park, FL 32073
www.marketmastersSE.com

Phillip Parsons, Broker
904-272-0435
pparsons@mmsejax.com

Property Info
County: Marion
ID: #8526

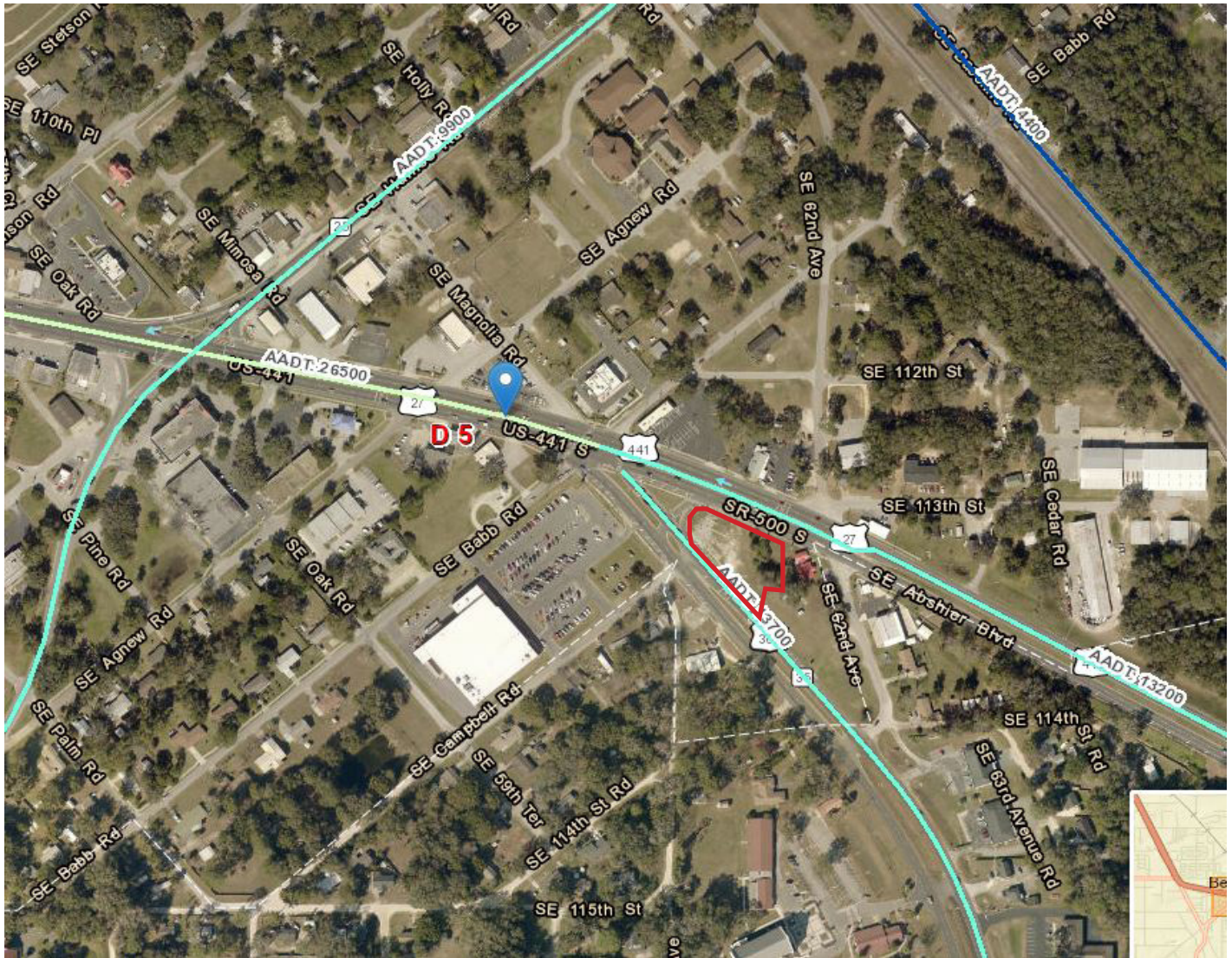
LAND FOR SALE

TRAFFIC COUNT PICTURE



SEQ US 441 AT US 301, BELLEVIEW, FL 34420
0.7± ACRES

MARKETMASTERS
OF THE SOUTHEAST



Demographics	1 Mile	3 Mile	5 Mile
Pop. Est. 2016	4,254	17,805	52,504
Pop. Est. 2021	4,253	18,295	54,823
2016 Est. Avg. HH Income	\$48,801	\$54,790	\$52,920

Traffic Count	Daily	Trucks
US 441	13,200	1,632
US 301	13,700	1,306

Source: Florida Department of Transportation (FDOT)



1890 Kingsley Ave, Suite 102
Orange Park, FL 32073
www.marketmastersSE.com

Phillip Parsons, Broker
904-272-0435
pparsons@mmsejax.com

Property Info
County: Marion
ID: #8526