

LAND FOR SALE

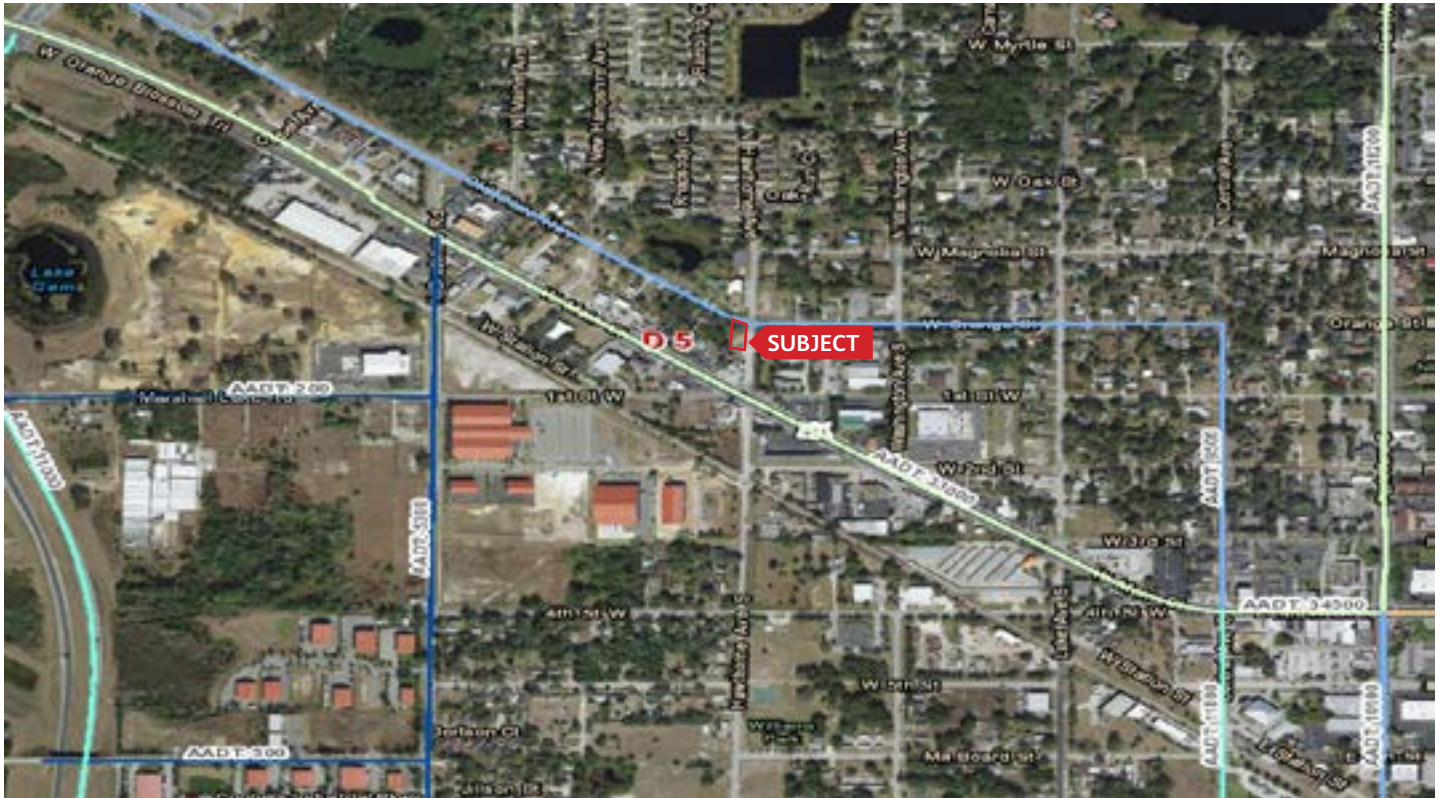
Corner Lot with High Visibility

SWQ SR 437A AT HAWTHORNE AVE. APOPKA, FL 32703
0.80± ACRES AVAILABLE



PROPERTY FEATURES

- ▶ Corner Lot, 0.80± acres
- ▶ Access from Hawthorne or 437A
- ▶ Highly visible corner at busy intersection
- ▶ Zoned industrial 1 (I-1)
- ▶ Parcel ID. 16-21-28-5034-00010
- ▶ Great location for multitude of uses
- ▶ Frontage 152 ft ± on SR 437A
- ▶ 231ft ± on Hawthorne Ave
- ▶ Daily traffic is 13,000 vehicles per day
- ▶ Call for pricing



LAND FOR SALE

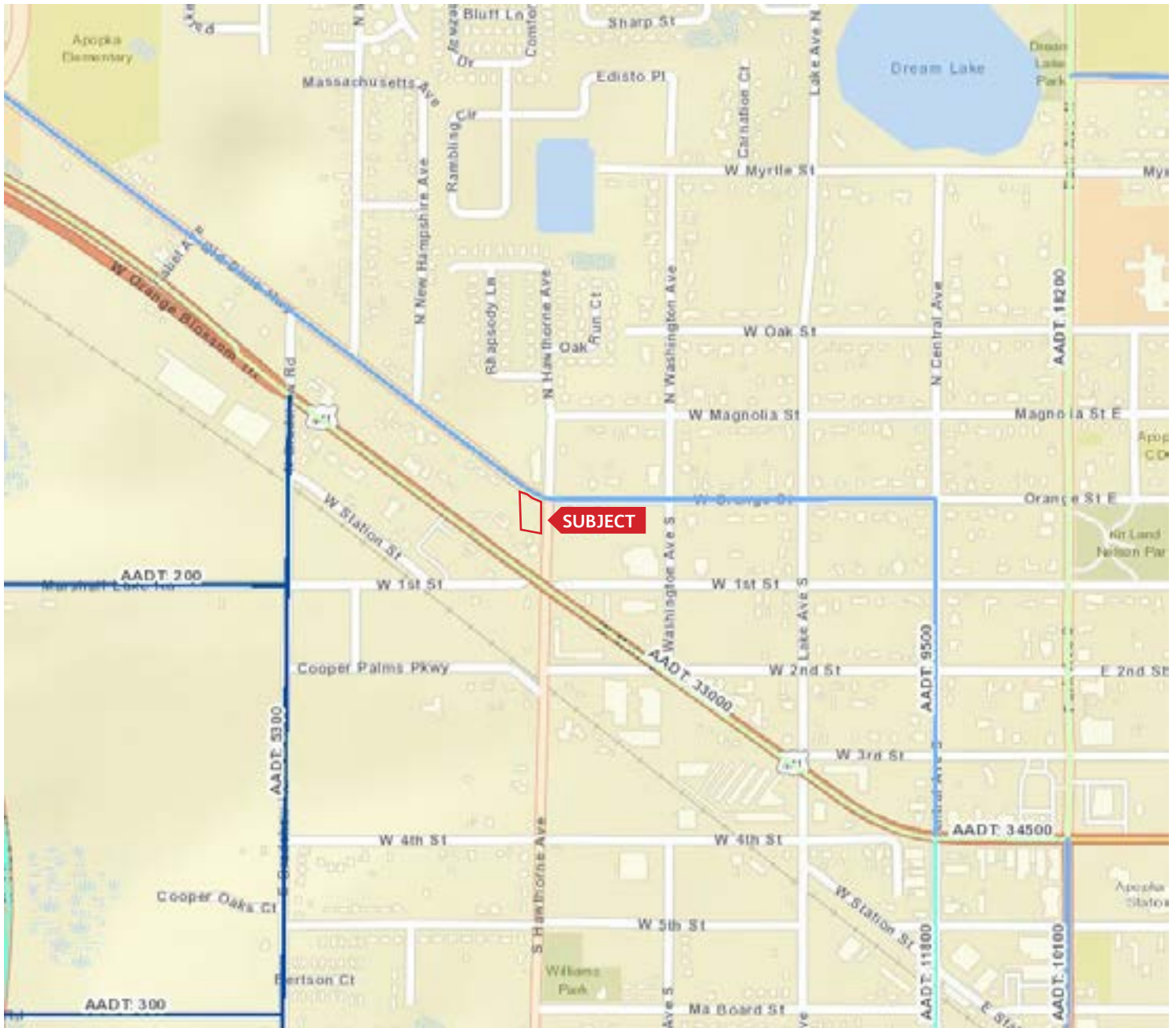
Corner Lot with High Visibility

SWQ SR 437A AT HAWTHORNE AVE. APOPKA, FL 32703

0.80± ACRES AVAILABLE



MARKETMASTERS
OF THE SOUTHEAST



1890 Kingsley Ave, Suite 102
Orange Park, FL 32073
www.marketmastersSE.com

Phillip Parsons, Broker
904-272-0435
pparsons@mmsejax.com

Property Info
Apopka, FL
ID. #9540

LAND FOR SALE

Corner Lot with High Visibility

SWQ SR 437A AT HAWTHORNE AVE. APOPKA, FL 32703
0.80± ACRES AVAILABLE



Demographics	1 Mile	3 Mile	5 Mile
Pop. Est. 2016	5,656	52,910	120,184
Pop. Est. 2021	6,024	57,414	129,301
2016 Est. Avg. HH Income	\$49,533	\$63,216	\$71,400

Traffic Count	Daily	Trucks
SR 437A	13,300	585

Source: Florida Department of Transportation (FDOT)



1890 Kingsley Ave, Suite 102
Orange Park, FL 32073
www.marketmastersSE.com

Phillip Parsons, Broker
904-272-0435
pparsons@mmsejax.com

Property Info
Apopka, FL
ID. #9540