

RETAIL SPACE AVAILABLE

8090 Hwy 100 & Hwy 214

KEYSTONE HEIGHTS, FL 32656



MARKETMASTERS
OF THE SOUTHEAST

• RETAIL SPACE FEATURES

- Two spaces available
- Each unit is 1000 SF±
- At the corner of Highway 100 and Hwy 214, Gustafson Rd
- 7,100 vehicles per day on Hwy 100
- Spaces are ready for Build-out
- Each is equipped with bathroom
- Call For Pricing and to see the spaces
904-272-0435



MARKETMASTERS
OF THE SOUTHEAST

1890 Kingsley Ave, Suite 102
Orange Park, FL 32073
www.marketmastersSE.com

Phillip Parsons, Broker
904-272-0435
pparsons@mmsejax.com

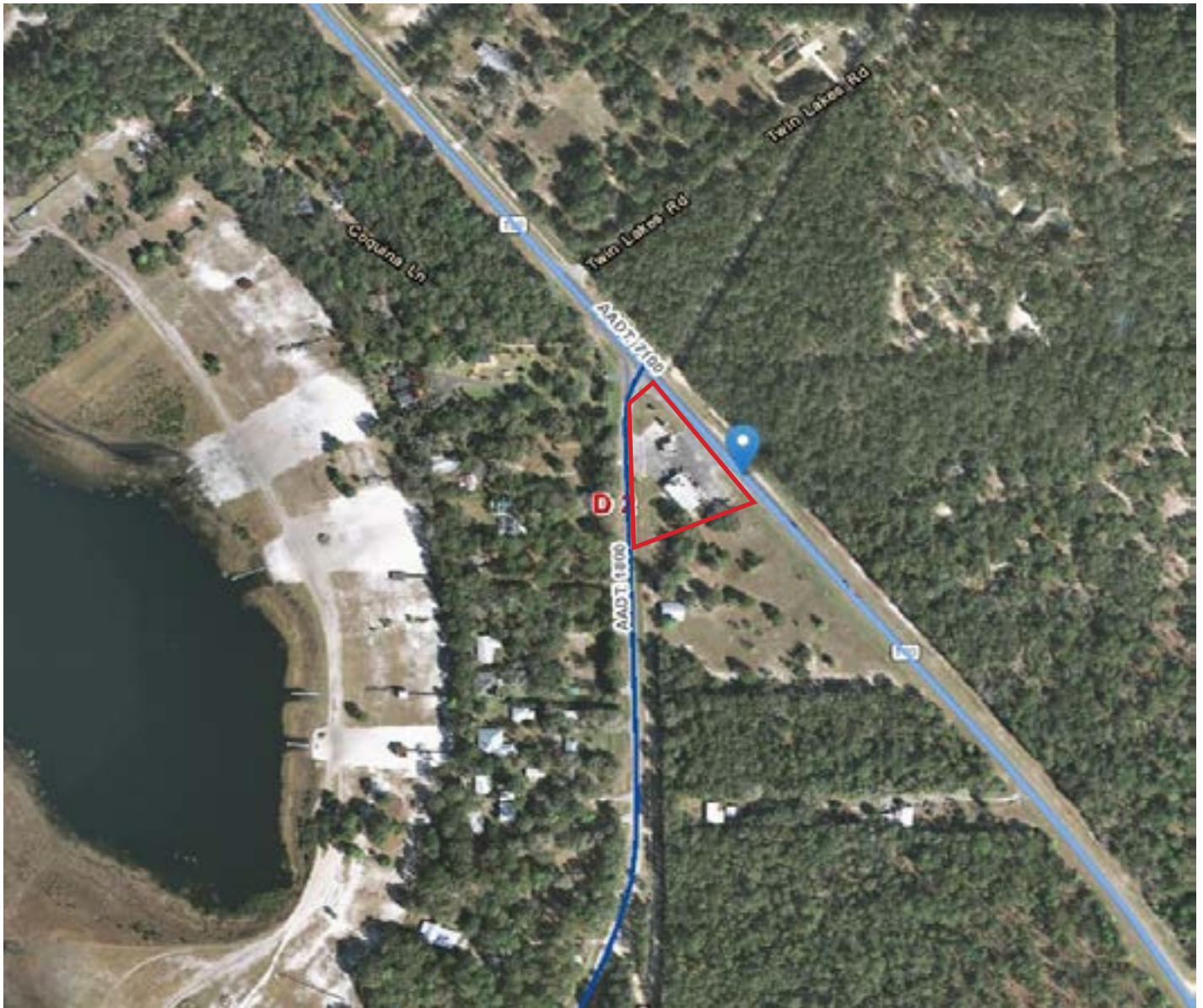
Property Info
County: Clay
ID: #930-CLAY

RETAIL SPACE AVAILABLE TRAFFIC MAP

8090 HWY 100 and 214, GUSTAFSON RD.
KEYSTONE HEIGHTS, FL 32656



MARKETMASTERS
OF THE SOUTHEAST



1890 Kingsley Ave, Suite 102
Orange Park, FL 32073
www.marketmastersSE.com

Phillip Parsons, Broker
904-272-0435
pparsons@mmsejax.com

Property Info
County: Clay
ID: #930-CLAY

RETAIL SPACE AVAILABLE

Two Spaces Side by Side

8090 HIGHWAY 100 AND HIGHWAY 214
KEYSTONE HEIGHTS, FL 32656



MARKETMASTERS
OF THE SOUTHEAST



MARKETMASTERS
OF THE SOUTHEAST

1890 Kingsley Ave, Suite 102
Orange Park, FL 32073
www.marketmastersSE.com

Phillip Parsons, Broker
904-272-0435
pparsons@mmsejax.com

Property Info
County: Clay
ID: #930-CLAY

RETAIL SPACE AVAILABLE

8090 HIGHWAY 100 AND HIGHWAY 214
KEYSTONE HEIGHTS, FL 32656



MARKETMASTERS
OF THE SOUTHEAST



1000 SF± OF SPACE, READY
FOR OCCUPANCY

GREAT FOR:

VAP STORE

ANTIQUE SHOP

OFFICE SPACE

DANCE STUDIO

2ND SPACE WITH
PRIVACY WALL, WHICH
CAN BE TAKEN DOWN.

EASY TO SEE FROM THE
HIGHWAY.

AMPLE PARKING.

PLUMPING, AC AND WATER
UP TO CODE AND IN GOOD
WORKING ORDER.



1890 Kingsley Ave, Suite 102
Orange Park, FL 32073
www.marketmastersSE.com

Phillip Parsons, Broker
904-272-0435
pparsons@mmsejax.com

Property Info
County: Clay
ID: #874-CLAY