

## LAND FOR SALE

# Large Land Parcel with Interstate Access



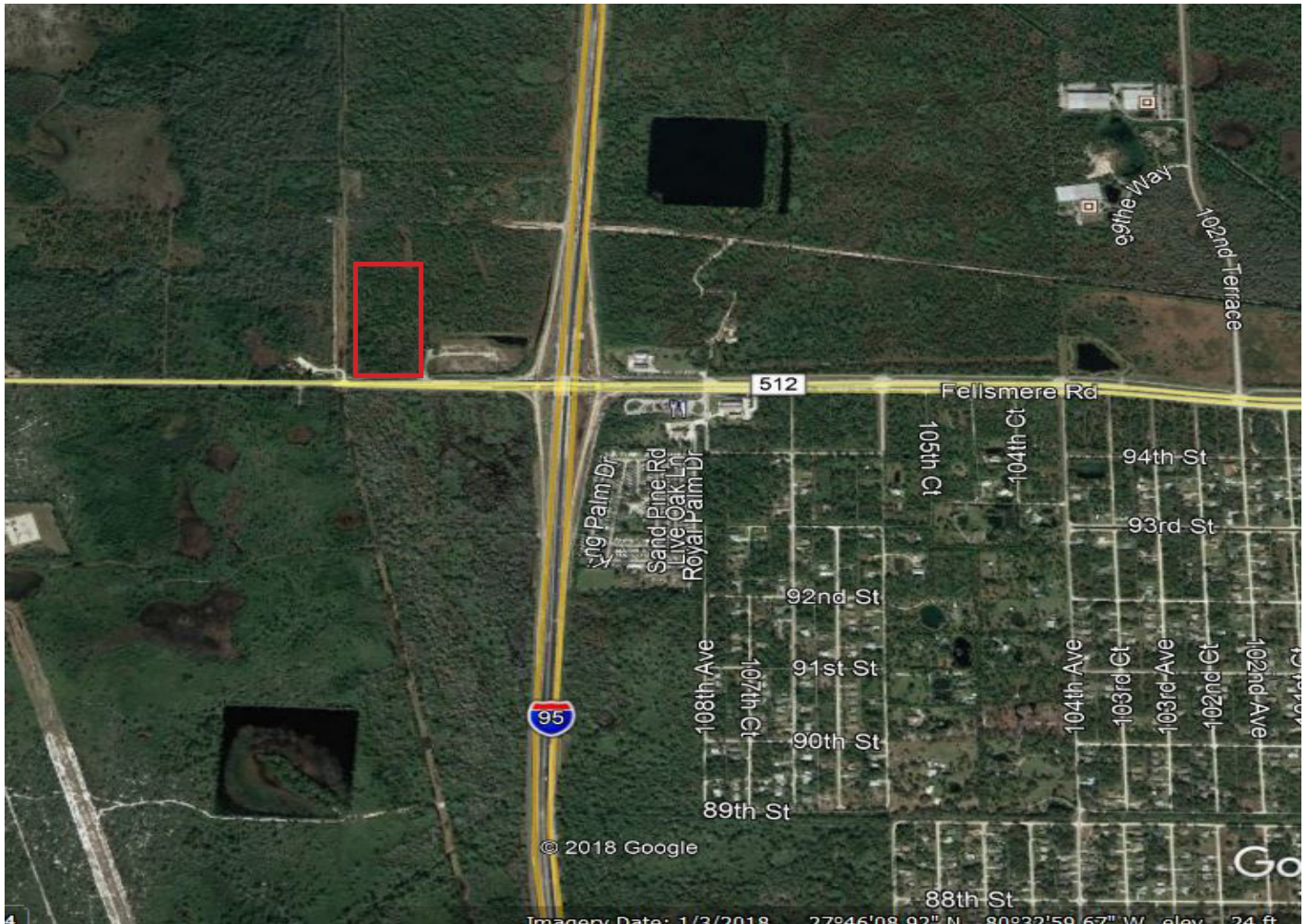
MARKETMASTERS  
OF THE SOUTHEAST

I-95 AT CR 512, FELLSMERE, FL 32948

10.0± ACRES AVAILABLE

## PROPERTY FEATURES

- Large parcel totaling 10.0± acres
- Zoned commercial general, (CG)
- Right near I-95 for easy access
- Excellent location for a **truck stop**, commercial center or travel station
- Parcel ID: 31382000000500000002.1
- Call for pricing



MARKETMASTERS  
OF THE SOUTHEAST

1890 Kingsley Ave, Suite 102  
Orange Park, FL 32073  
[www.marketmastersSE.com](http://www.marketmastersSE.com)

Phillip Parsons, Broker  
904-272-0435  
[pparsons@mmsejax.com](mailto:pparsons@mmsejax.com)

Property Info  
Indian River, FL  
ID. #9564



## LAND FOR SALE

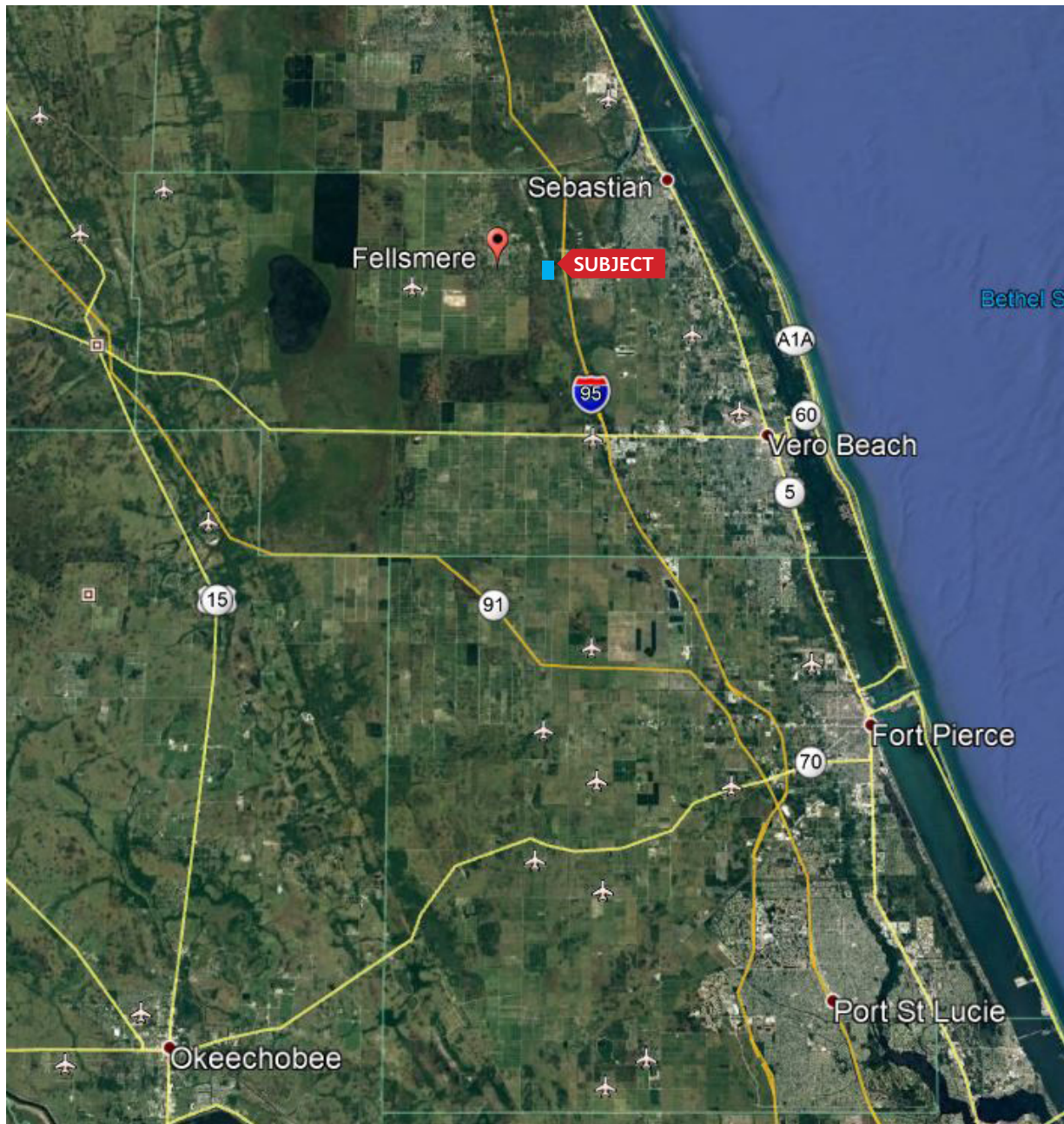
# Large Land Parcel with Interstate Access



I-95 AT CR 512, FELLSMERE, FL 32948

10.0± ACRES AVAILABLE

**MARKETMASTERS**  
OF THE SOUTHEAST



**MARKETMASTERS**  
OF THE SOUTHEAST

1890 Kingsley Ave, Suite 102  
Orange Park, FL 32073  
[www.marketmastersSE.com](http://www.marketmastersSE.com)

Phillip Parsons, Broker  
904-272-0435  
[pparsons@mmsejax.com](mailto:pparsons@mmsejax.com)

Property Info  
Indian River, FL  
ID #9564

# LAND FOR SALE

## Traffic Count Map



I-95 AT CR 512, FELLSMERE, FL 32948  
10.0± ACRES AVAILABLE

**MARKETMASTERS**  
OF THE SOUTHEAST

