

RETAIL SPACE AVAILABLE

920-6 BLANDING BLVD
ORANGE PARK, FLORIDA 32065



MARKETMASTERS
OF THE SOUTHEAST



MARKETMASTERS
OF THE SOUTHEAST

1890 Kingsley Ave, Suite 102
Orange Park, FL 32073
www.marketmastersse.com

Phillip Parsons, Broker
904-272-0435
pparsons@mmsejax.com

Property Info
County: CLAY
ID: #884

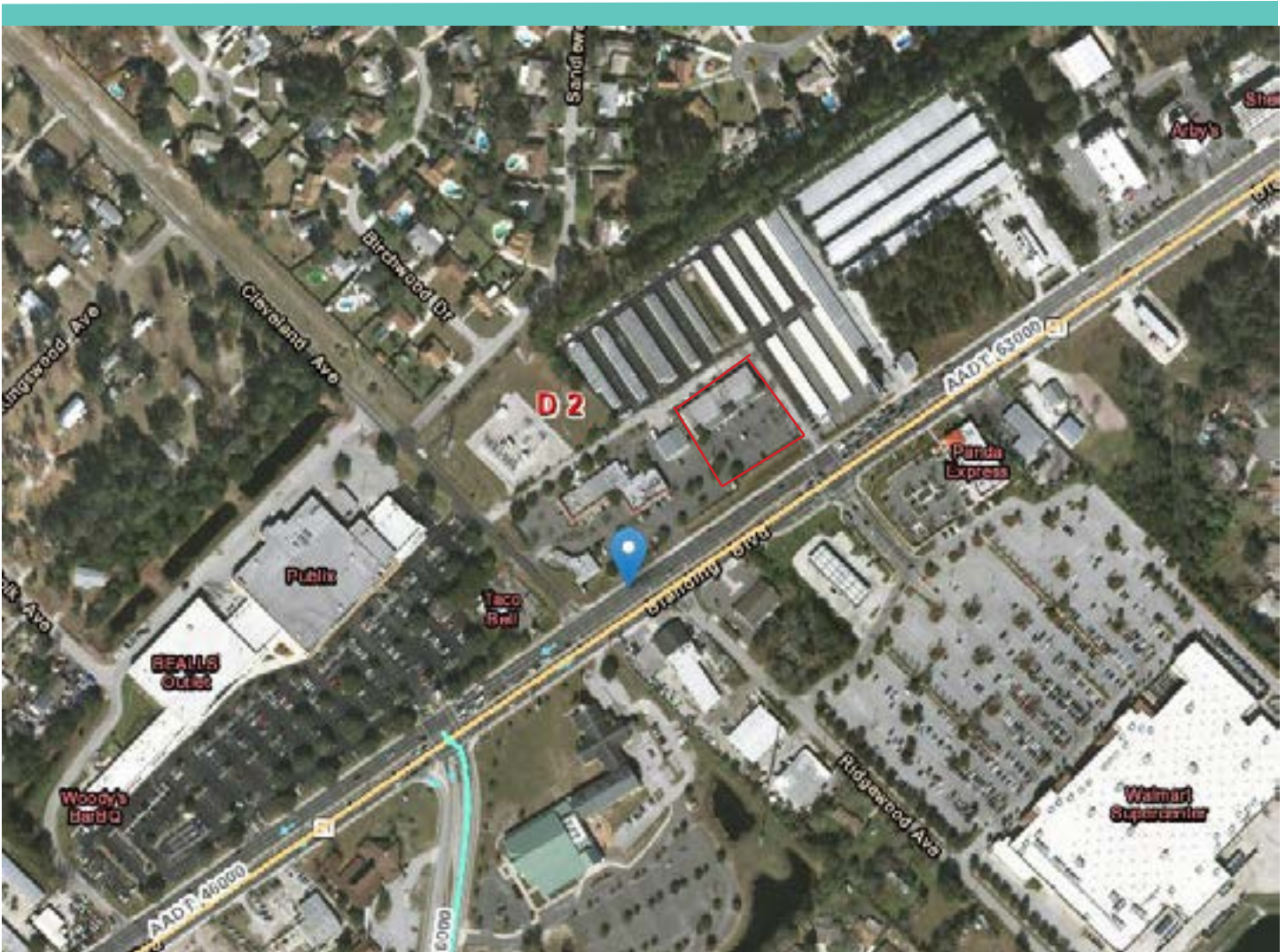
RETAIL SPACE AVAILABLE

920-6 BLANDING BLVD
ORANGE PARK, FLORIDA 32065



MARKETMASTERS
OF THE SOUTHEAST
COMMERCIAL REAL ESTATE

- ▶ Directly across the street from the Walmart entrance
- ▶ Convenient access off of Blanding Blvd.
- ▶ 1320 SF± in unit 920-6
- ▶ Plenty of parking
- ▶ Established retail center
- ▶ 63,000 vehicles pass the center daily on Blanding



RETAIL SPACE AVAILABLE

920-6 BLANDING BLVD
ORANGE PARK, FLORIDA 32065



MARKETMASTERS
OF THE SOUTHEAST

Established location with other tenants that create additional traffic.



Spacious interior ready for build-out.



Office space and storage area in the back