

LAND FOR SALE

Blanding Blvd at Jefferson Ave

SWQ Blanding Blvd at Jefferson Ave
Orange Park FL 32065



MARKETMASTERS
OF THE SOUTHEAST

PROPERTY FEATURES

- ▶ 3.44± acres - 149,846sq ft
- ▶ Zoned BB intermediate business
- ▶ 35' on Blanding & 330' on Jefferson
- ▶ Next to large housing development
- ▶ Elementary school across the street
middle school south of site
- ▶ Parcel ID 40-04-25-020673-050-02
- ▶ Access from Blanding next to
McDonalds
- ▶ Call for pricing



1890 Kingsley Ave, Suite 102
Orange Park, FL 32073
www.marketmastersSE.com

Phillip Parsons, Broker
904-272-0435
pparsons@mmsejax.com

Property Info
County: Caly
ID: 9551

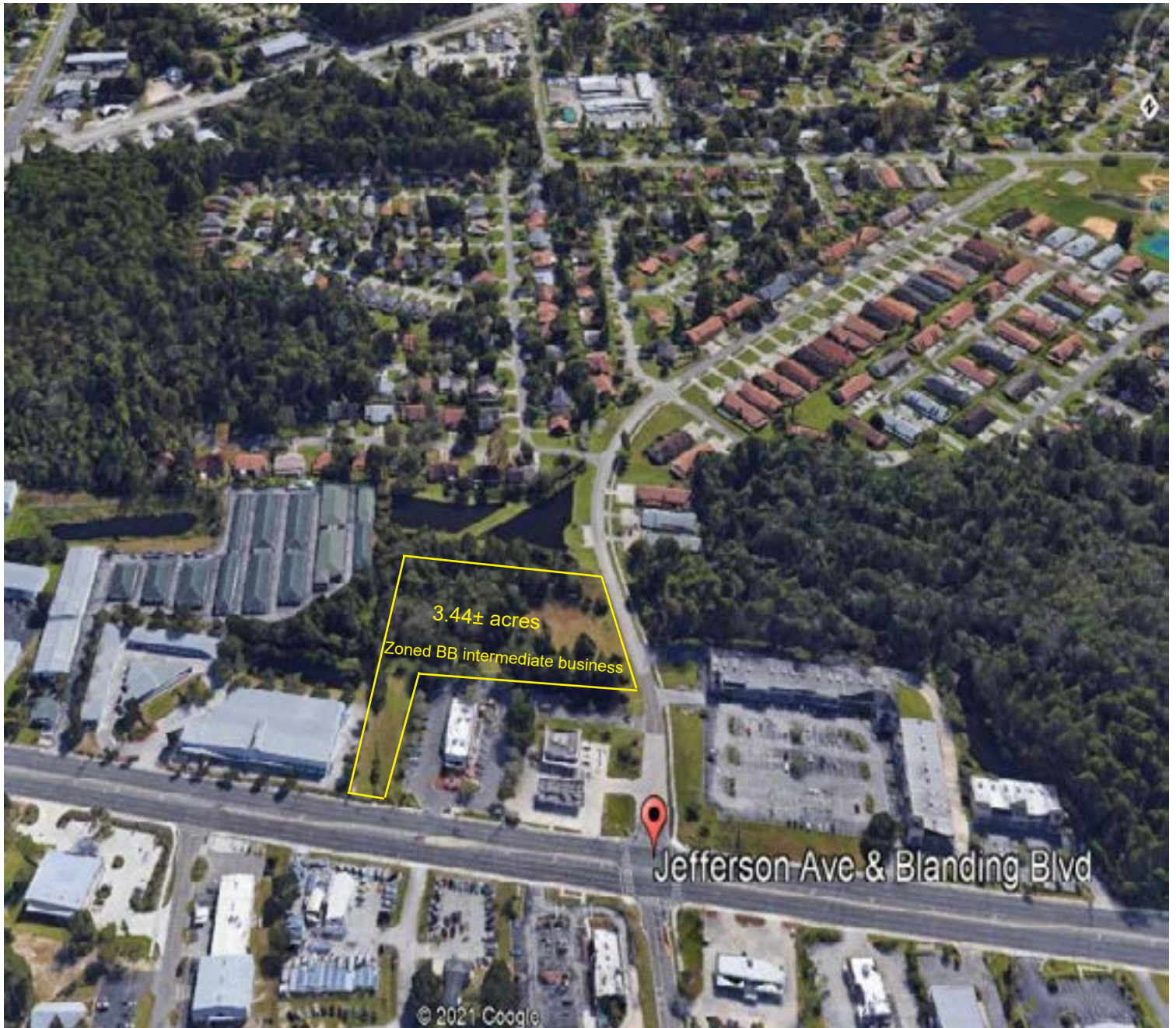
LAND FOR SALE

Blanding Blvd at Jefferson Ave

SWQ Blanding Blvd at Jefferson Ave
Orange Park FL 32065



MARKETMASTERS
OF THE SOUTHEAST



1890 Kingsley Ave, Suite 102
Orange Park, FL 32073
www.marketmastersSE.com

Phillip Parsons, Broker
904-272-0435
pparsons@mmsejax.com

Property Info
County: Caly
ID: 9551

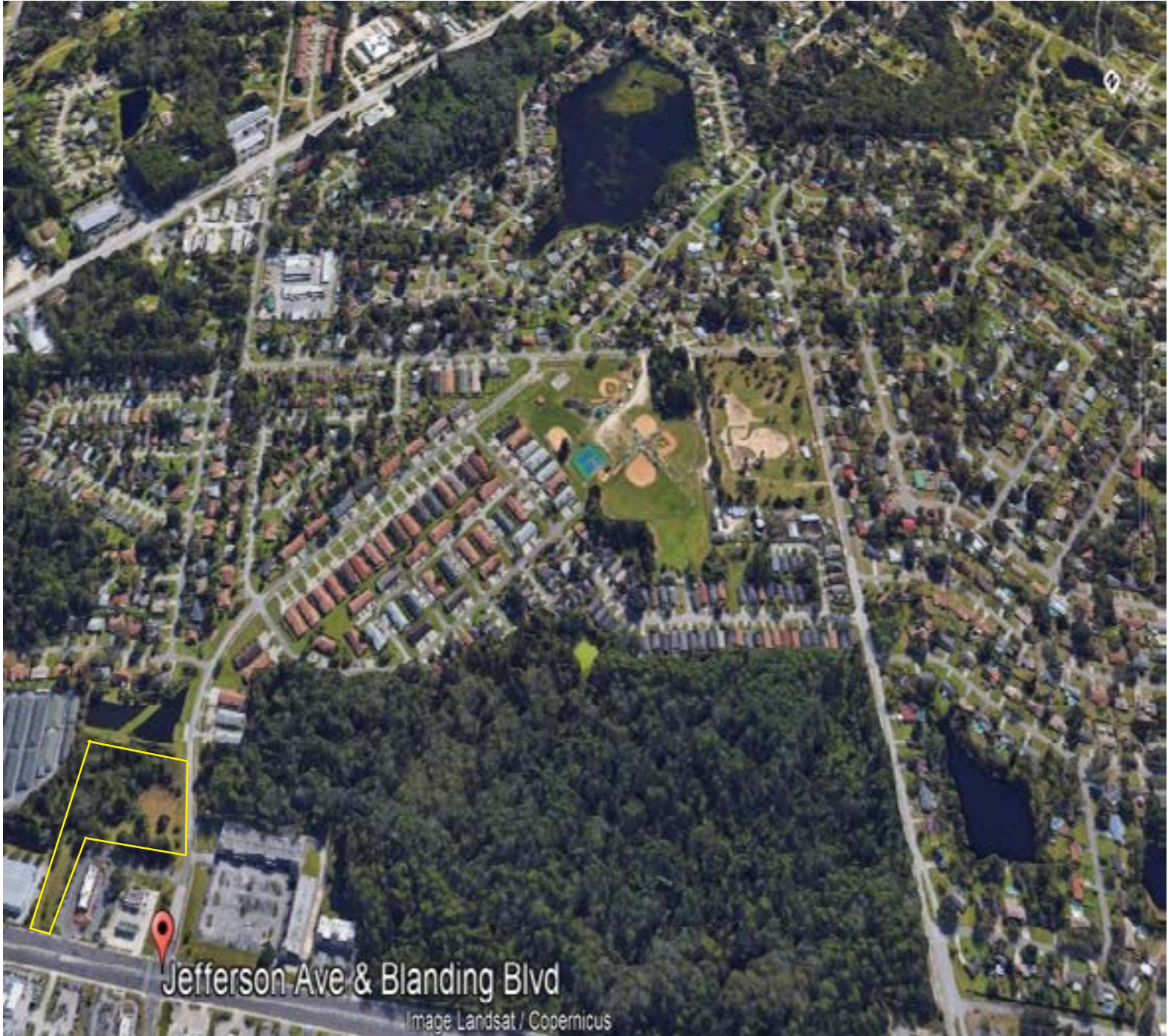
LAND FOR SALE

Blanding Blvd at Jefferson Ave

SWQ Blanding Blvd at Jefferson Ave
Orange Park FL 32065



MARKETMASTERS
OF THE SOUTHEAST



1890 Kingsley Ave, Suite 102
Orange Park, FL 32073
www.marketmastersSE.com

Phillip Parsons, Broker
904-272-0435
pparsons@mmsejax.com

Property Info
County: Caly
ID: 9551

LAND FOR SALE

SWQ Blanding Blvd at Jefferson Ave
Orange Park FL 32065



MARKETMASTERS
OF THE SOUTHEAST



Picture from back of lot looking toward Blanding Blvd.
35' wide strip.

Picture from back of lot looking toward Jefferson St.



Picture from Blanding Blvd. looking toward the back of the property, next door to McDonalds.